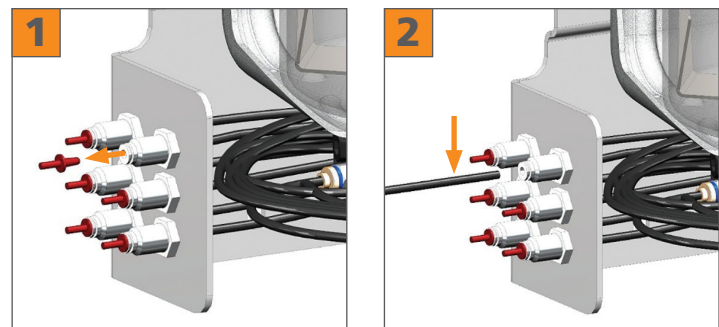
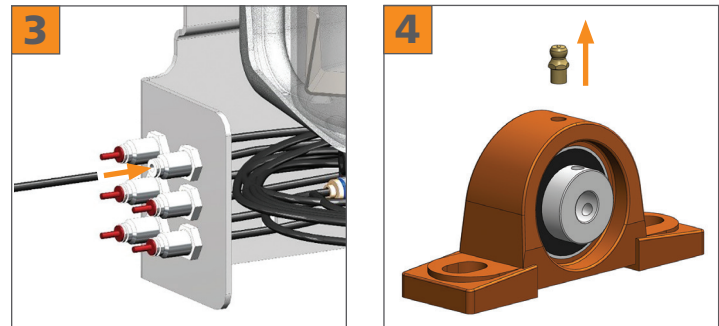


Connecting Lube Lines



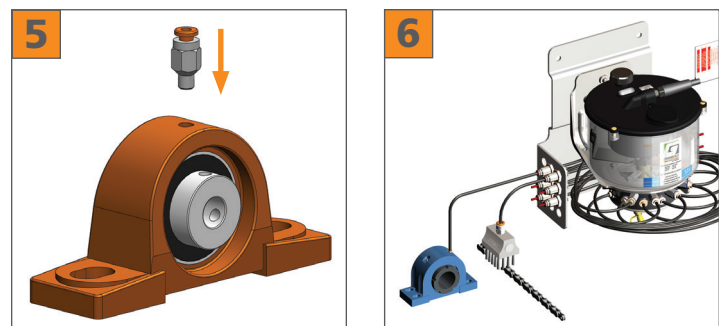
1 Remove bulkhead plug

2 Position lubrication line from bearing fitting



3 Insert lubrication line into bulkhead fitting

4 Remove existing grease fitting

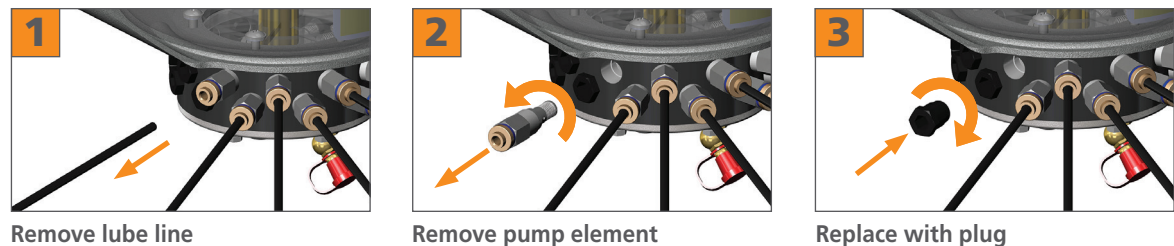


5 Replace with appropriate fitting

6 Route lube lines to appropriate bearings/components

Note: Temporary bulkhead plugs prevent dust from entering and reduce leakage during shipping or storage.

Reducing Lube Points

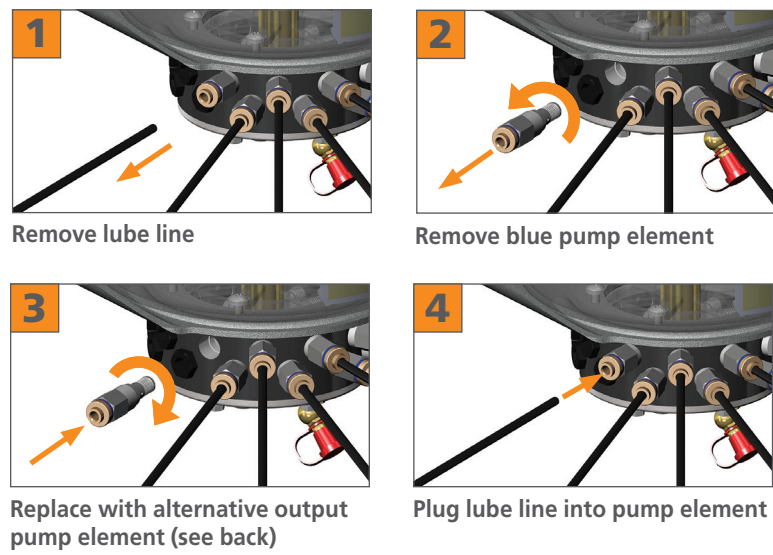


1 Remove lube line

2 Remove pump element

3 Replace with plug

Adjusting Output



1 Remove lube line

2 Remove blue pump element

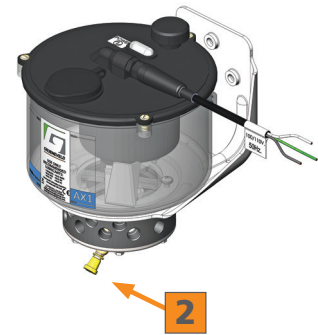
3 Replace with alternative output pump element (see back)

4 Plug lube line into pump element

Filling Pump



1 Pour lubricant in the top fill. Oil & NLGI #000 greases ONLY.



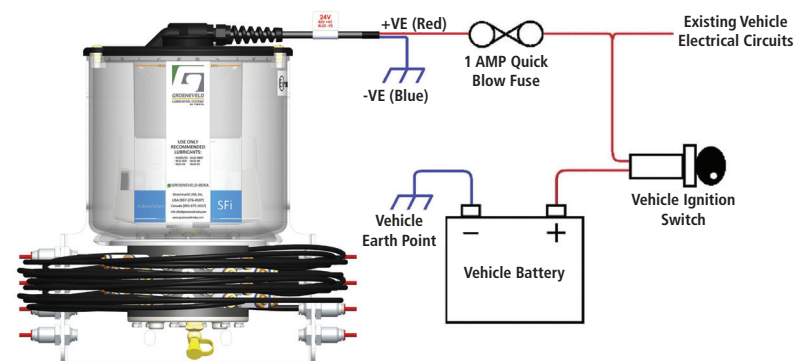
2 With grease gun or pump, fill at the zerk fitting. NLGI #1 and #2 ONLY.



For quick selection and output calculations, open the mobile web app. MultiLineSF.com



SFi Electrical Information



Voltage: 12/24VDC (50/60Hz) **Fuse Rating: 1A** **Blue = Negative (-)**
Power Rating: 2A **IP Rating: IP66** **Red = Positive (+)**

Grease Compatibility

Lubricant Viscosity	Minimum Working Temperature	
	Other commercially available lithium grease	Groeneveld GreenLube for MultiLine
	Minimum Temperature	GreenLube Grease
NLGI-2	14°F (-10°C)	N/A
NLGI-1	9°F (-12.8°C)	GreenLube EP-1
NLGI-0	2°F (-16.7°C)	GreenLube EP-0
NLGI-00	-8°F (-16.7°C)	N/A
NLGI-000	-29°F (-33.9°C)	N/A
SAE80/90	-40°F (-40°C)	N/A

Lubricants containing solid additives such as PTFE (Teflon), graphite, molybdenum disulphide (MoS₂) or bentonite/bentonite (clay) based greases can cause blockages in the system and should not be used.

WARNING
www.timken.com/warnings

Alternative Pump Elements & Output

Timer	Run Time	Delay Time	Cycle Time	Pump Elements Output (cc/hour)					
				P-R010 Red	P-G015 Green	P-Y025 Yellow	P-B040 Blue	P-G060 Gray	P-B100 Black
0	Continuous 0.40 RPM			0.240	0.360	0.600	0.960	1.440	2.400
1	3 min	6 min	9 min	0.067	0.101	0.168	0.268	0.402	0.670
2	3 min	9 min	12 min	0.050	0.075	0.125	0.200	0.300	0.500
3	3 min	12 min	15 min	0.040	0.060	0.100	0.160	0.240	0.400
4	3 min	27 min	30 min	0.020	0.030	0.050	0.080	0.120	0.200
6	3 min	42 min	45 min	0.013	0.020	0.033	0.052	0.078	0.130
7	3 min	57 min	60 min	0.010	0.015	0.025	0.040	0.060	0.100

NOTE: Preset from factory at #4 timer setting. Red, green, yellow, grey, and black pump elements sold separately. Timer setting is easily adjusted via the override button and LED. See operator's manual.

Spare Parts and Accessories

Part Number	Description
MSF-P-R010	Red Pump Element – 0.010cc/stroke – (3 pack)
MSF-P-G015	Green Pump Element – 0.015cc/stroke – (3 pack)
MSF-P-Y025	Yellow Pump Element – 0.025cc/stroke – (3 pack)
MSF-P-B040	Blue Pump Element – 0.040cc/stroke – (3 pack)
MSF-P-G060	Grey Pump Element – 0.060cc/stroke – (3 pack)
MSF-P-B100	Black Pump Element – 0.100cc/stroke – (3 pack)
MSF-A-BP10	Blanking Plug (10 pack)
MSF-A-QF	Quick Fill Coupler Assembly
MSF-T-4N50E	4mm OD Tubing – Unprimed – 50ft/roll
MSF-T-4N50G	4mm OD Tubing – Primed – Grease – 50ft/r oll
MSF-T-4N50F	4mm OD Tubing – Primed – Food Grade Grease – 50ft/roll
F230229*	GreenLube EP-0 Grease – 35lb Pail
F801299*	GreenLube EP-1 Grease – 35lb Pail

* Available direct from Groeneveld-BEKA



4700 Lyons Road, Dayton, OH 45342
 Phone: 937-276-4507 | FAX: 937-276-4518
 Email: custserv-dayton@groeneveld-beka.com
www.groeneveld-beka.com/US